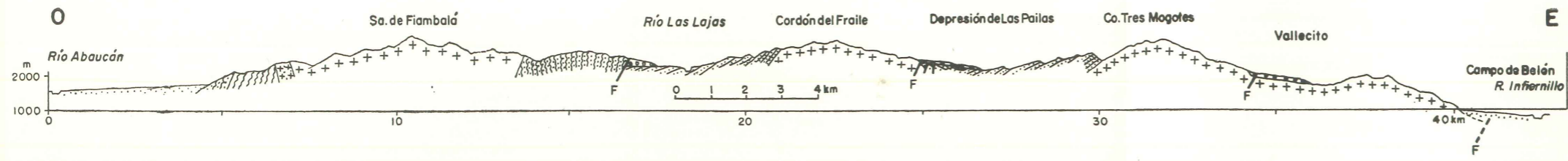
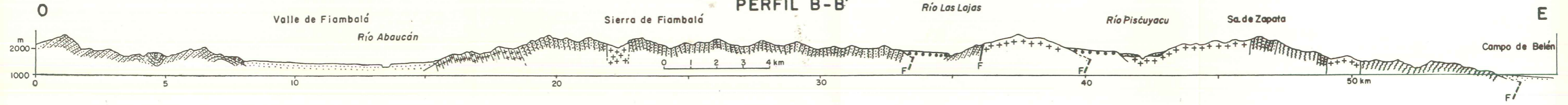


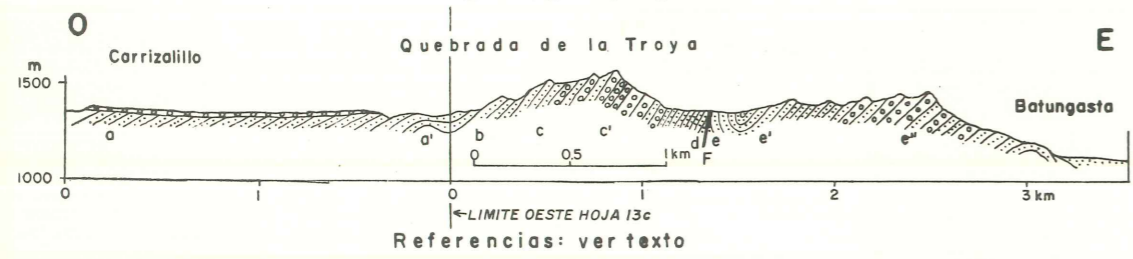
PERFIL A-A'



PERFIL B-B'



PERFIL C-C'



- Depósitos aluviales aterrazados (nivel inferior)
- Depósitos aluviales aterrazados (nivel superior)
- Diques de pórfiro andesítico
- Areniscas, etc., terciarias

- a = Granito
b = Pórfiro granítico
- Ortogneis
- Migmatitas
- Esquistos