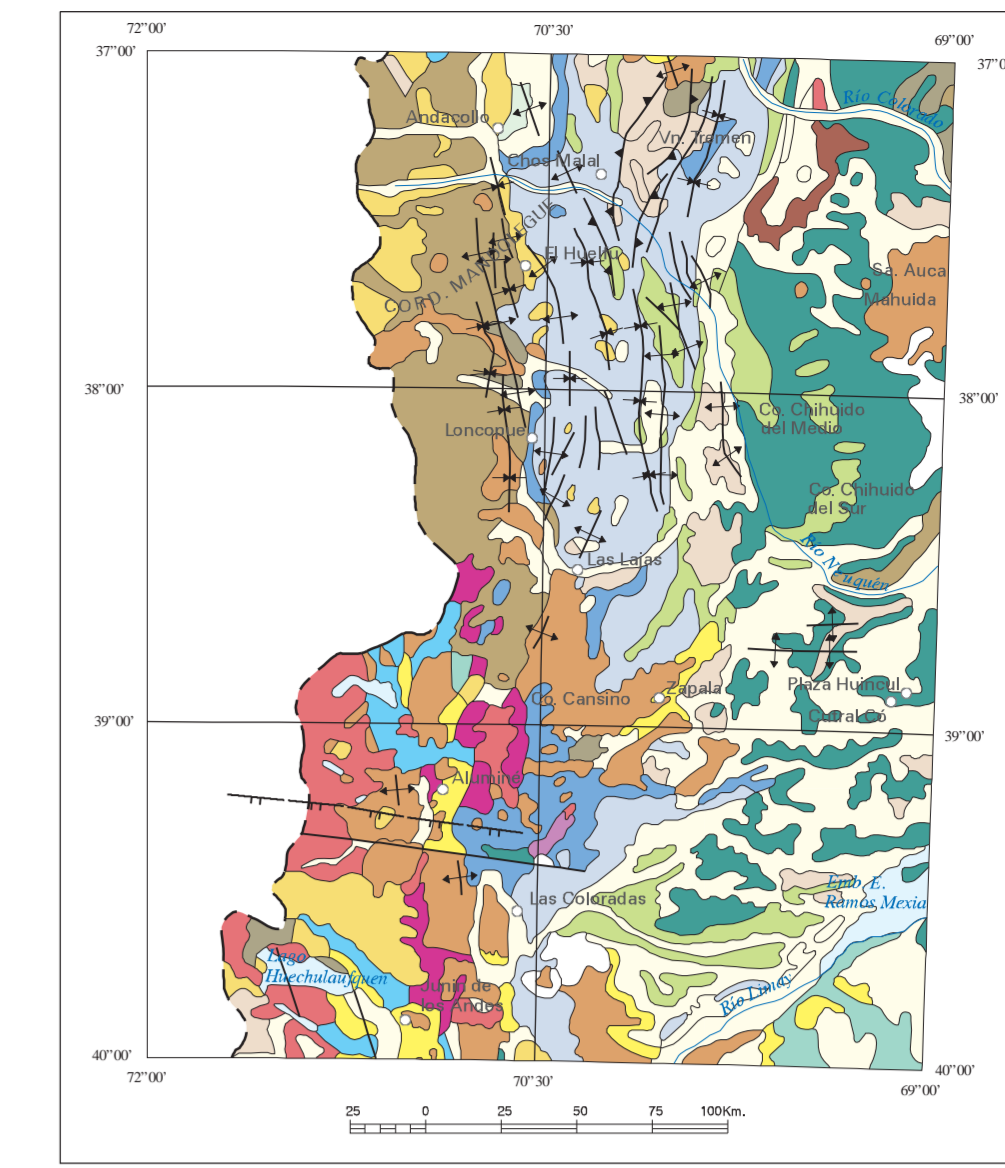
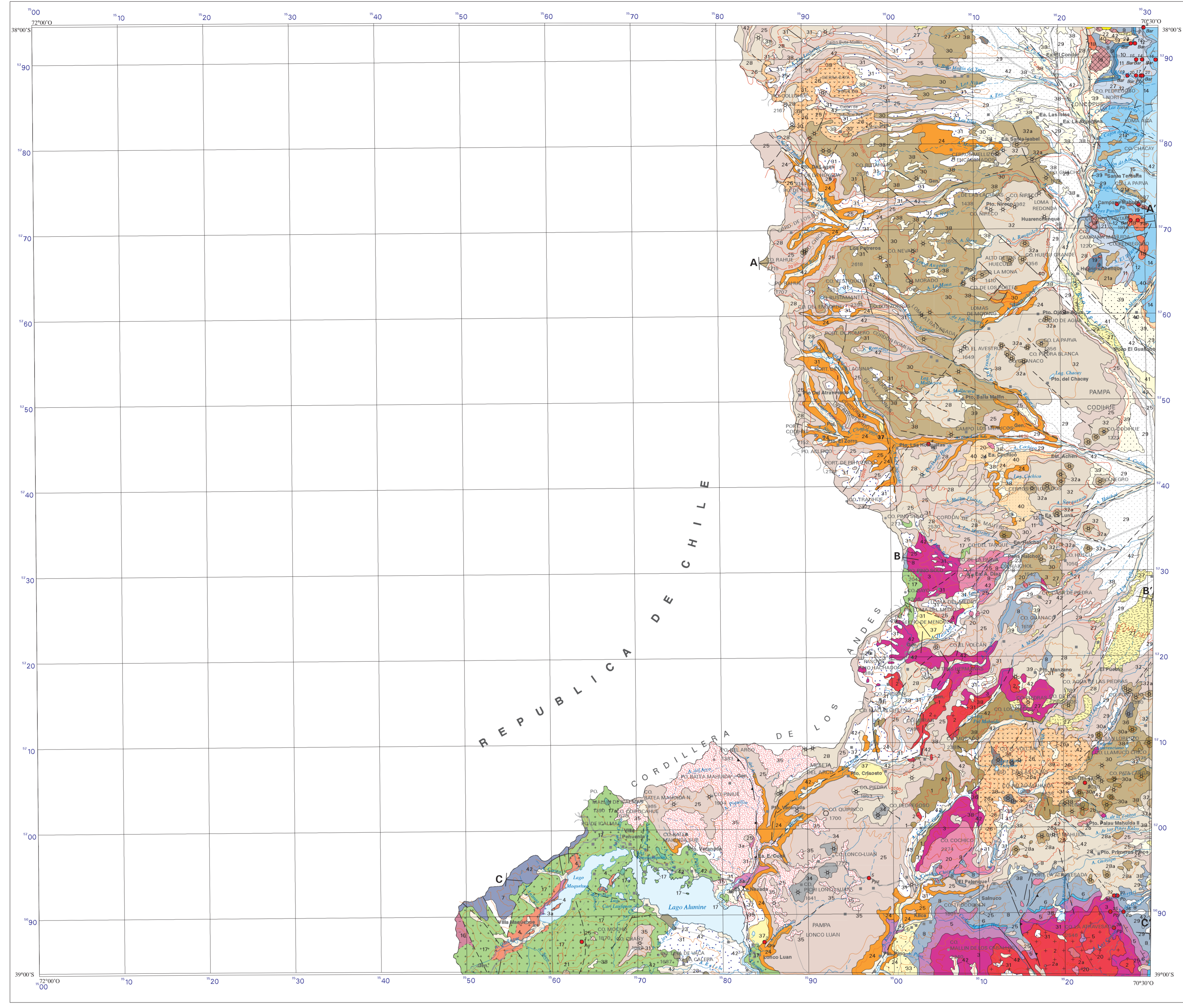


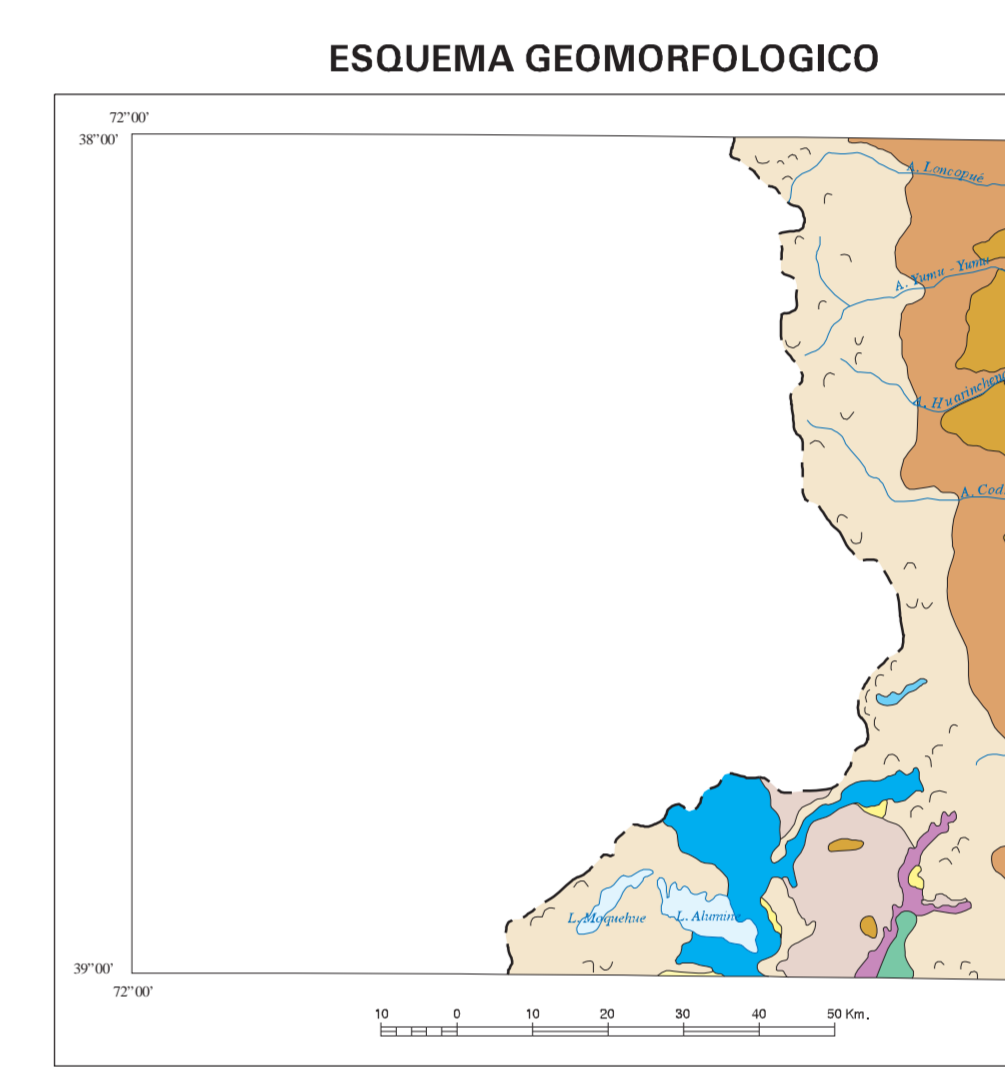


CUADRO ESTRATIGRAFICO

Table with columns for geological periods (CUATERNARIO, CENOZOICO, MESOZOICO, PALEOZOICO) and sub-periods (HOLOCENO, PLEISTOCENO, etc.). It lists various geological units with their corresponding lithological symbols and brief descriptions of their composition and age.



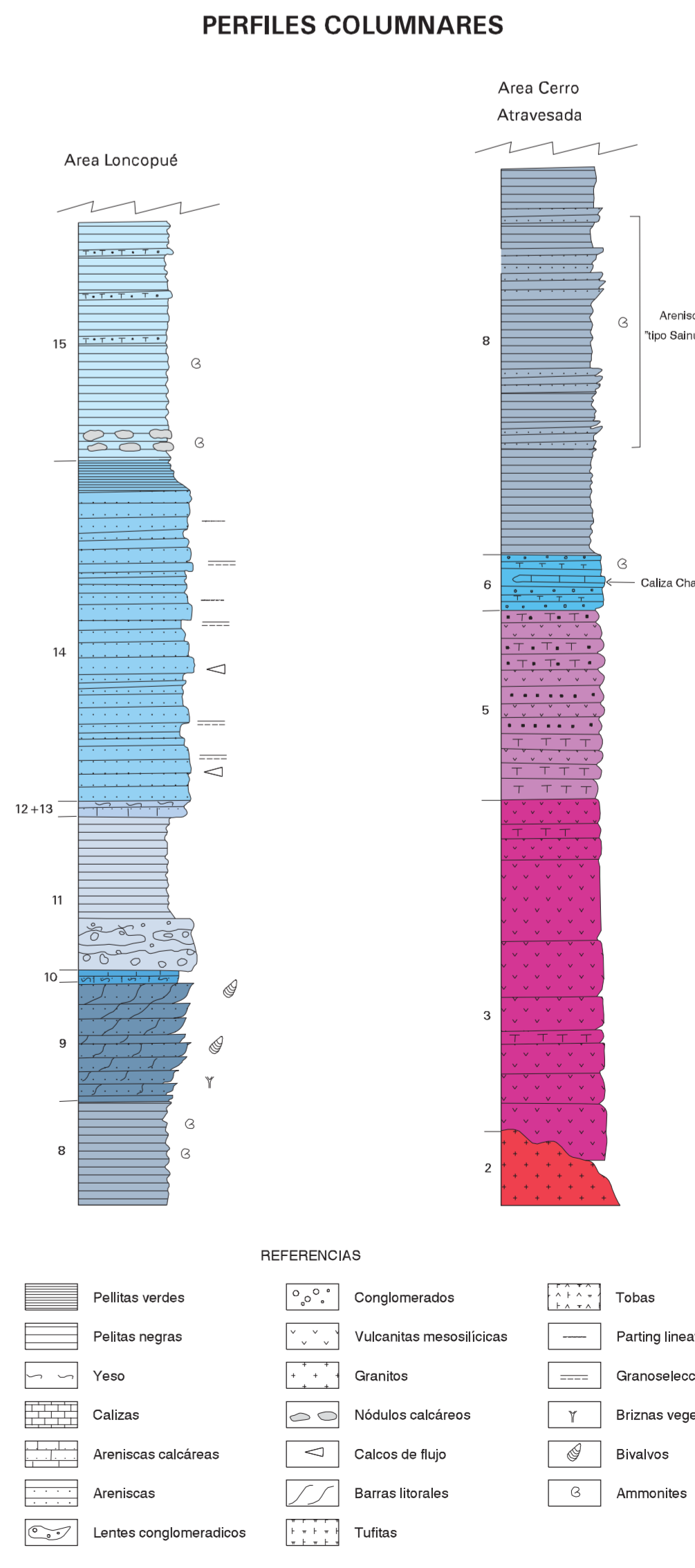
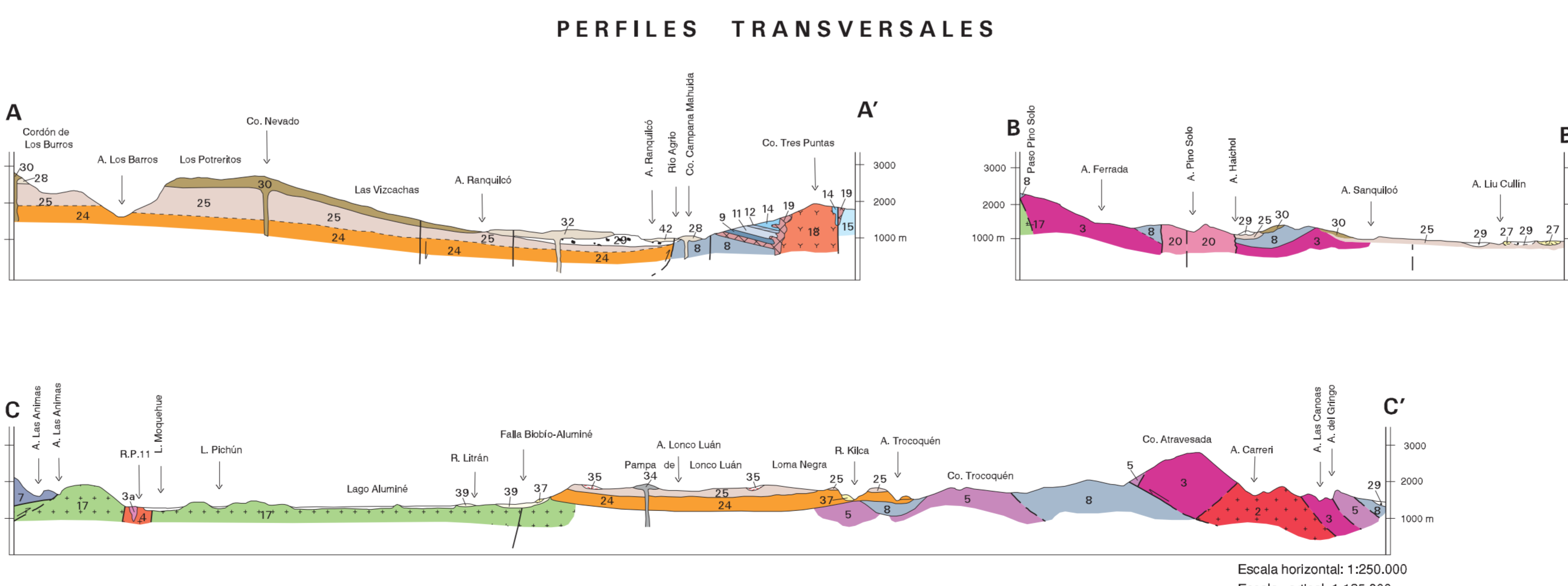
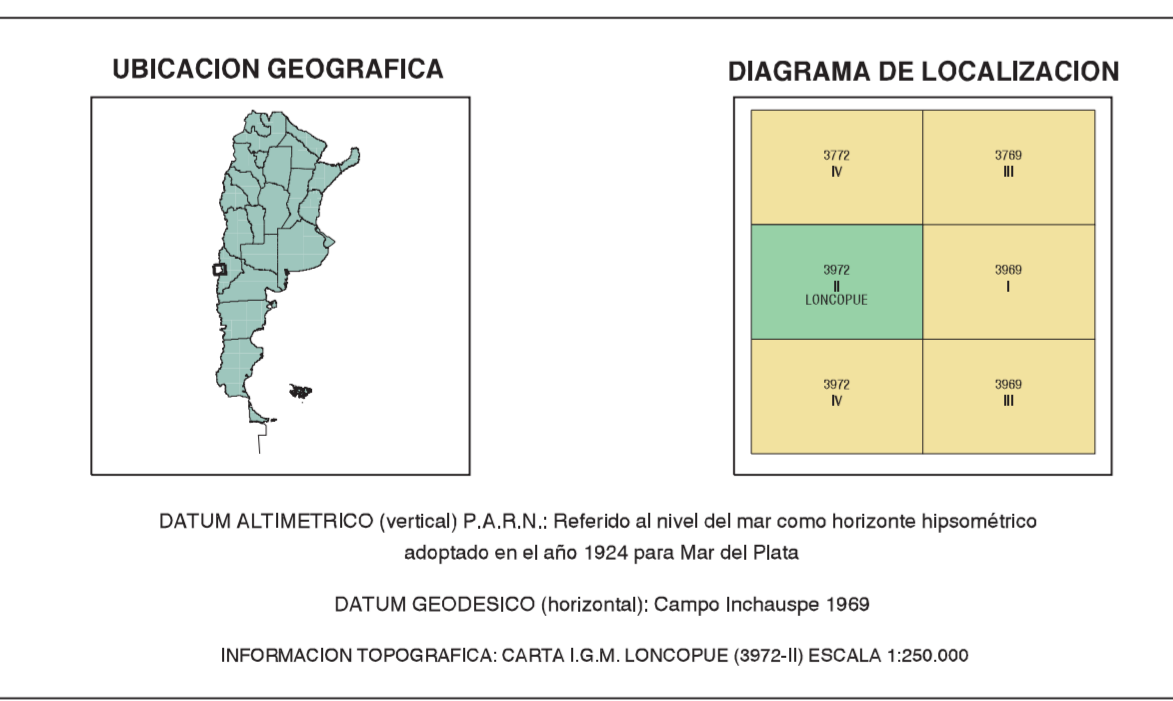
REFERENCIAS: Legend for the regional scheme, detailing various geological units and their corresponding colors and symbols.



REFERENCIAS: Legend for the geomorphic scheme, detailing various landforms and their corresponding colors and symbols.

REFERENCIAS GEOLOGICAS: Legend for geological features, including faults, contacts, and smaller structures.

REFERENCIAS CARTOGRAFICAS: Legend for cartographic features, including roads, rivers, and other infrastructure.



TRATAMIENTO INFORMATICO: UNIDAD SENSORES REMOTOS Y SIG IGRM
DIGITALIZACION Y EDICION: Maria L. Gambardi Alvarez

EDICION: 16 de Mayo 2011

NORMAS, DIRECCION Y SUPERVISION DEL IGRM
JEFE DE PROYECTO: J. C. M. Zanetti
GEOLOGIA: C. M. Zanetti, H. A. Leanza, A. Gustavo
RECURSOS MINERALES: A. G. M. Zanetti
PETROGRAFIA: G. R. Santamaría
SUPERVISION: H. A. Leanza