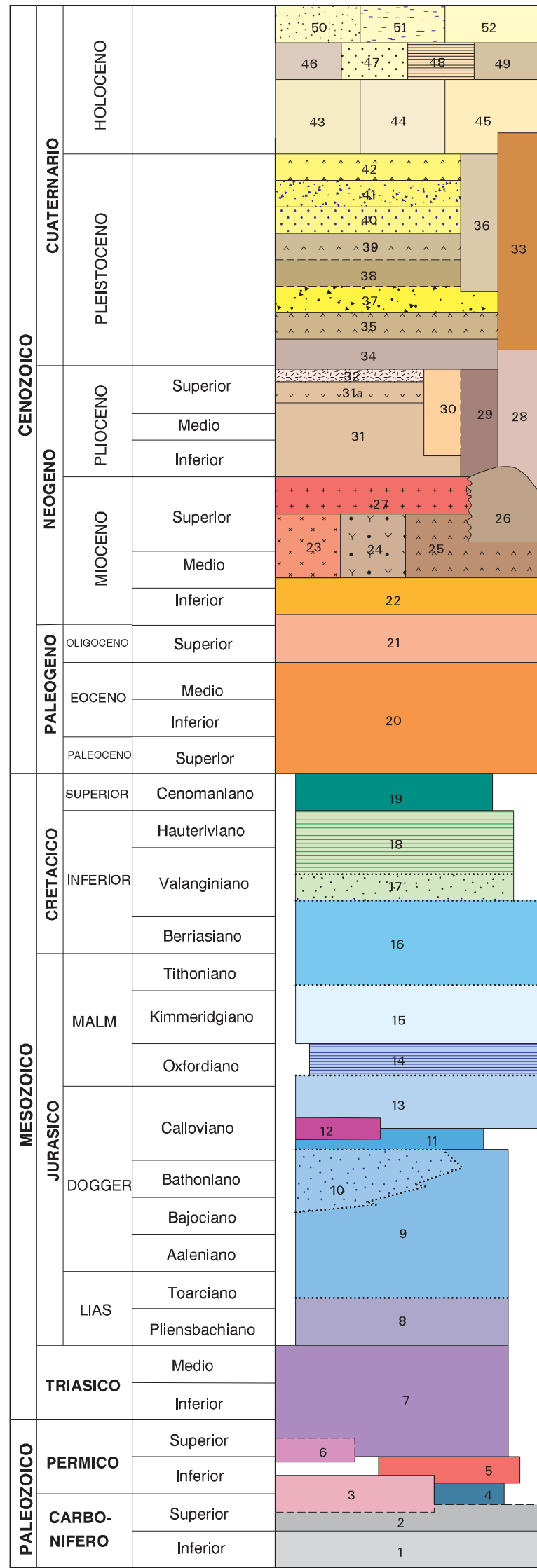
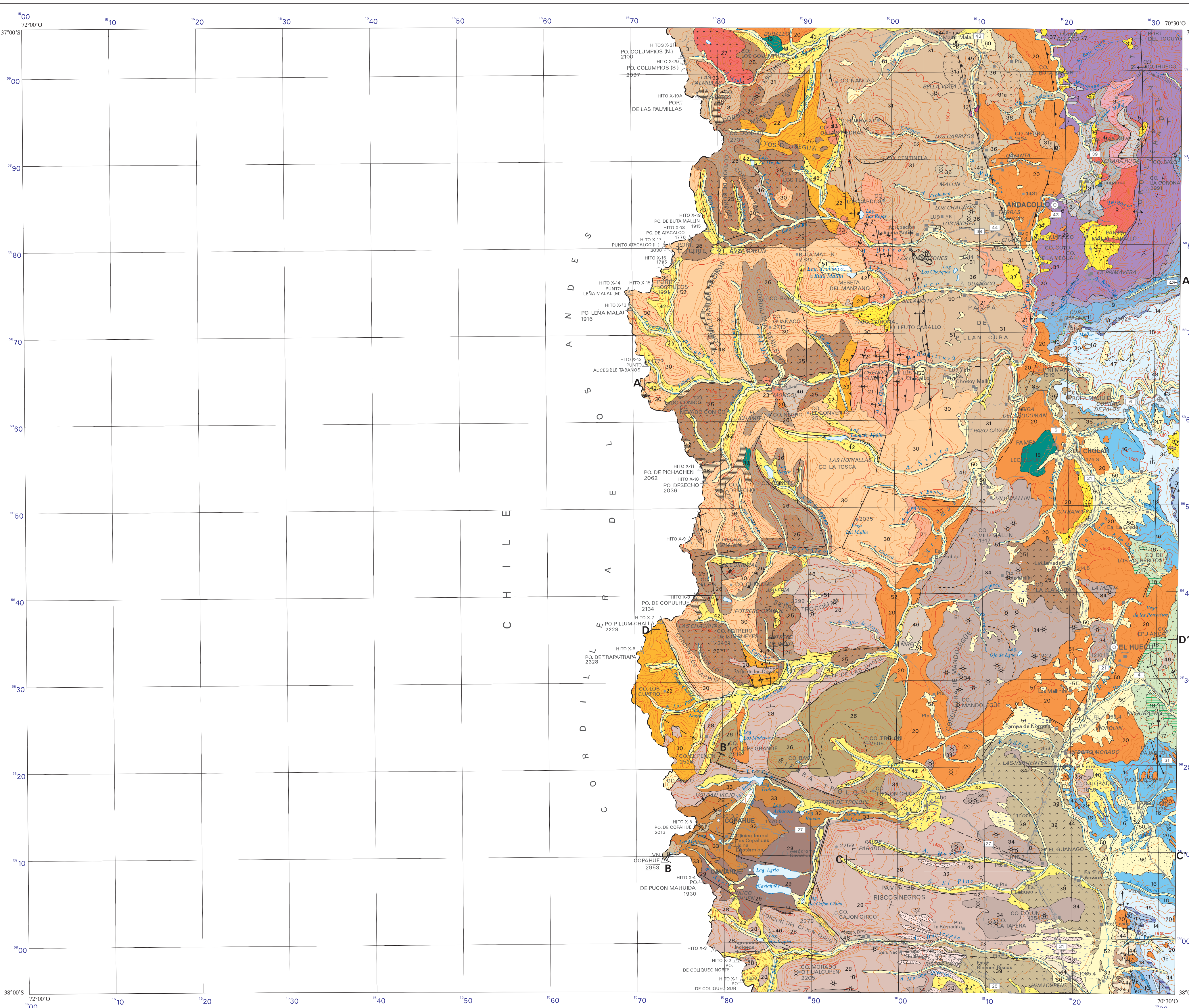


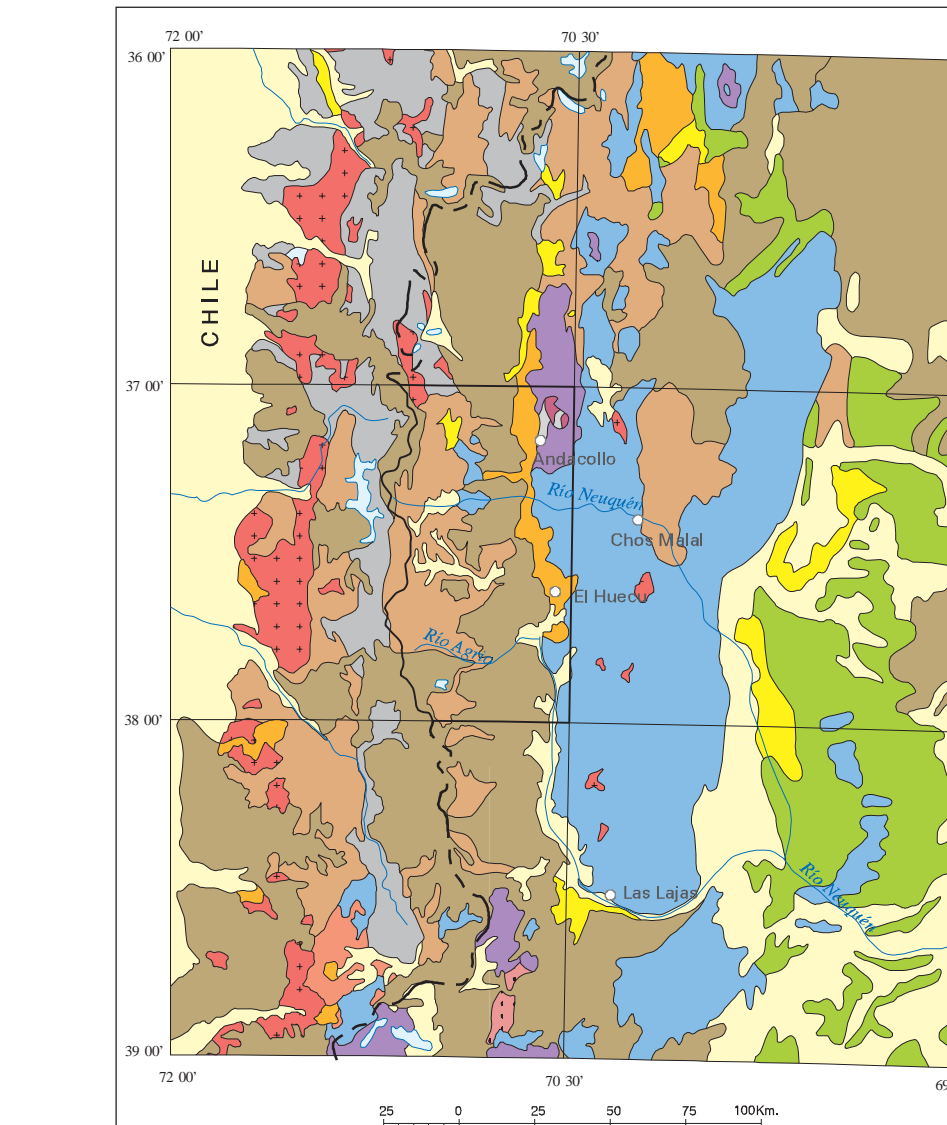
CUADRO ESTRATIGRAFICO



- Geological descriptions for units 1 through 42, detailing lithology and formation names.

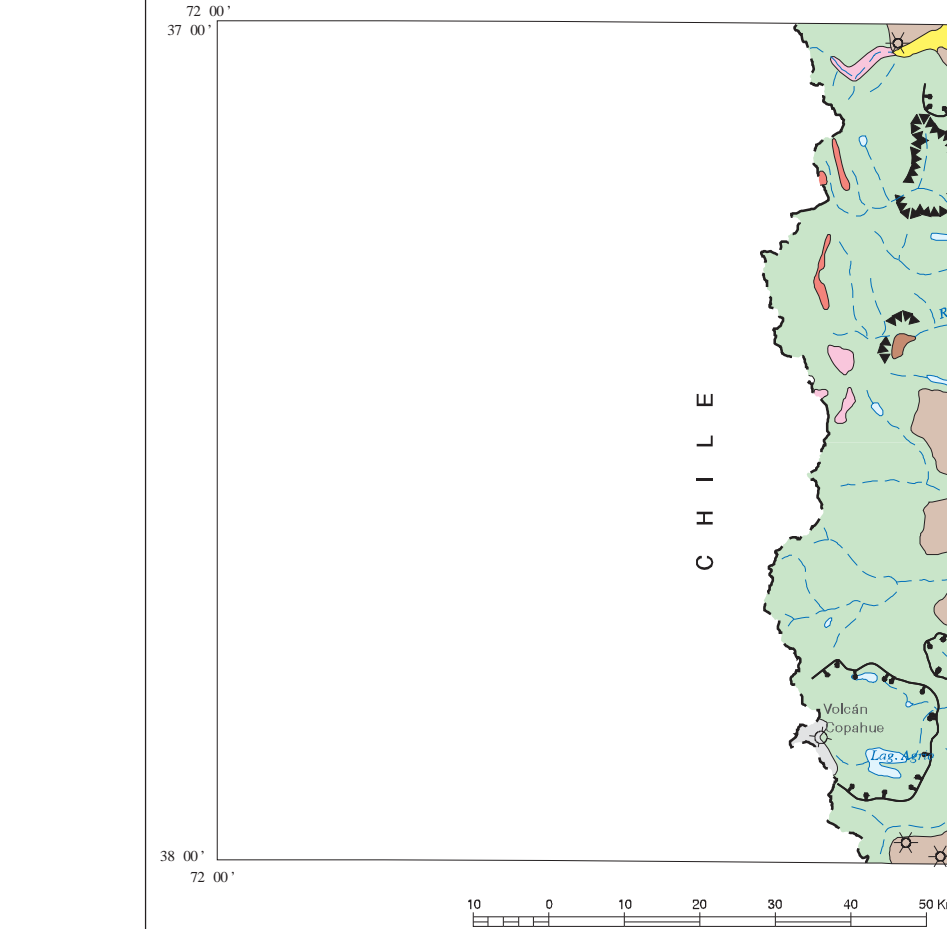


ESQUEMA REGIONAL



- Legend for the regional map, including sedimentary, volcanic, and metamorphic units.

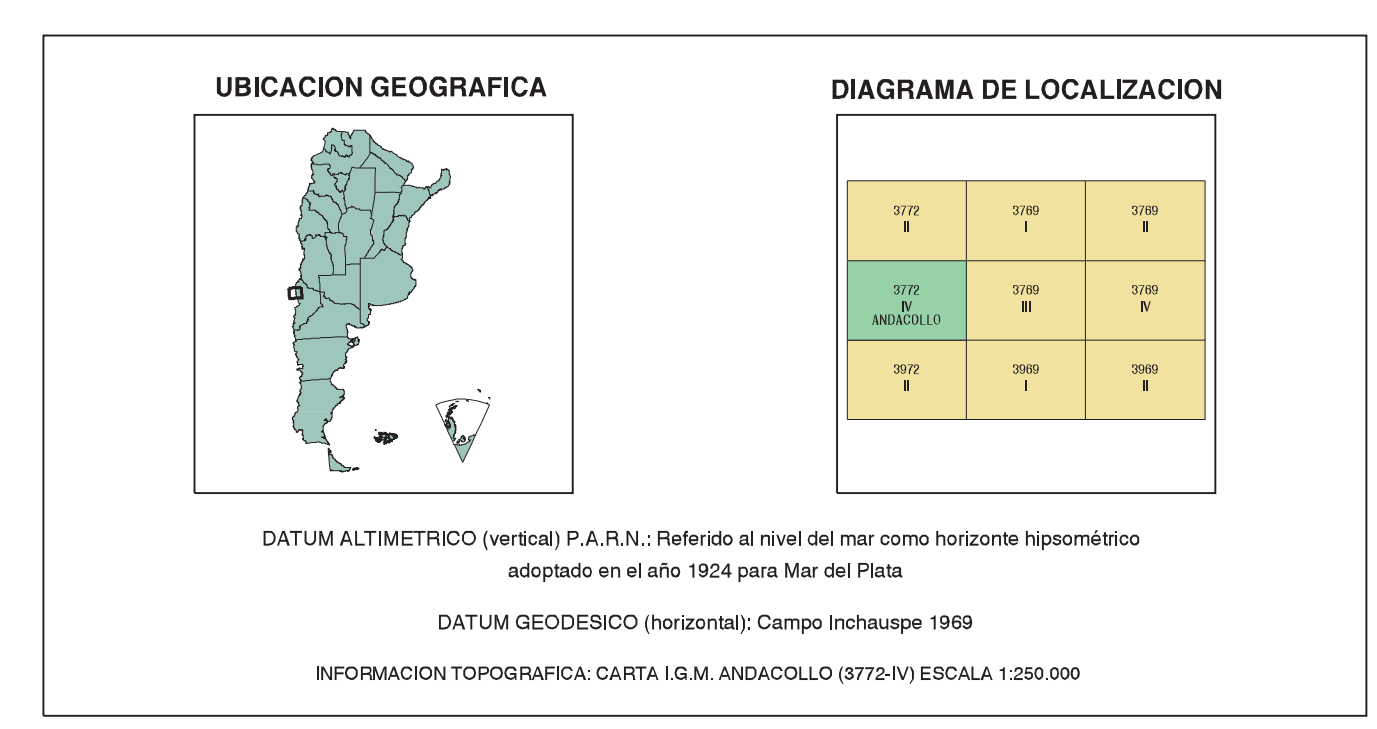
ESQUEMA GEOMORFOLOGICO



- Legend for the geomorphological map, detailing various landscape types and features.

- Geological symbols and abbreviations for faults, contacts, folds, and volcanic structures.

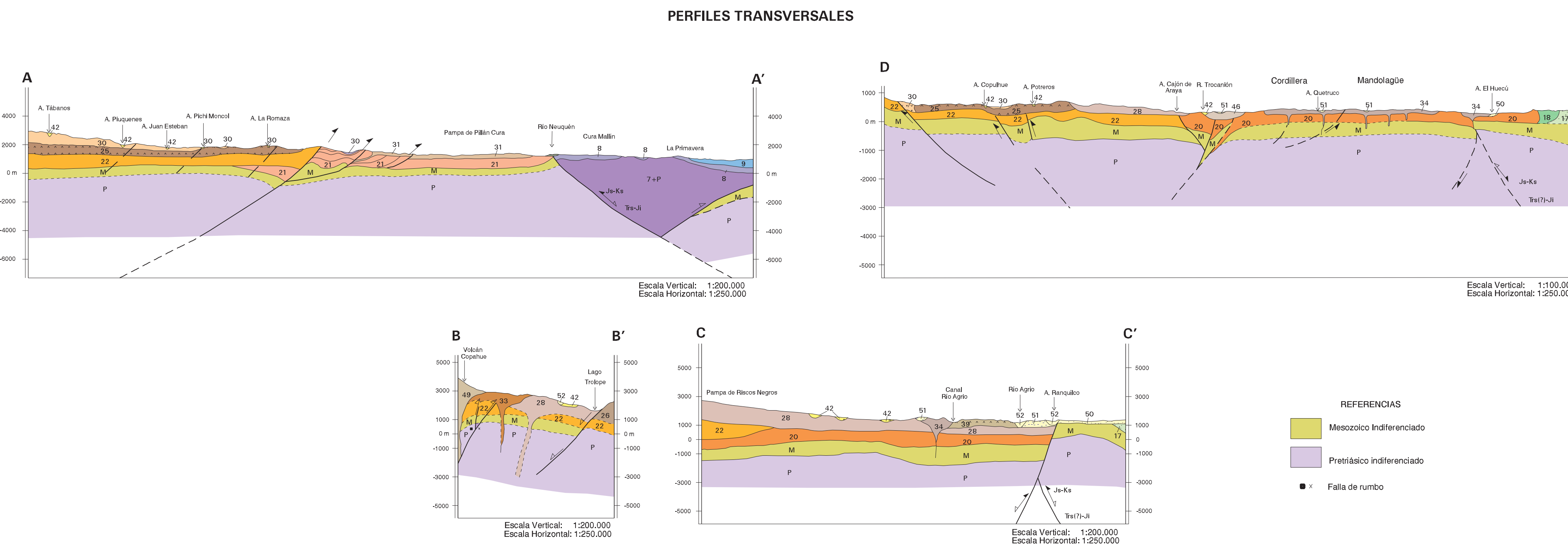
- Cartographic symbols and abbreviations for boundaries, roads, and other geographical features.



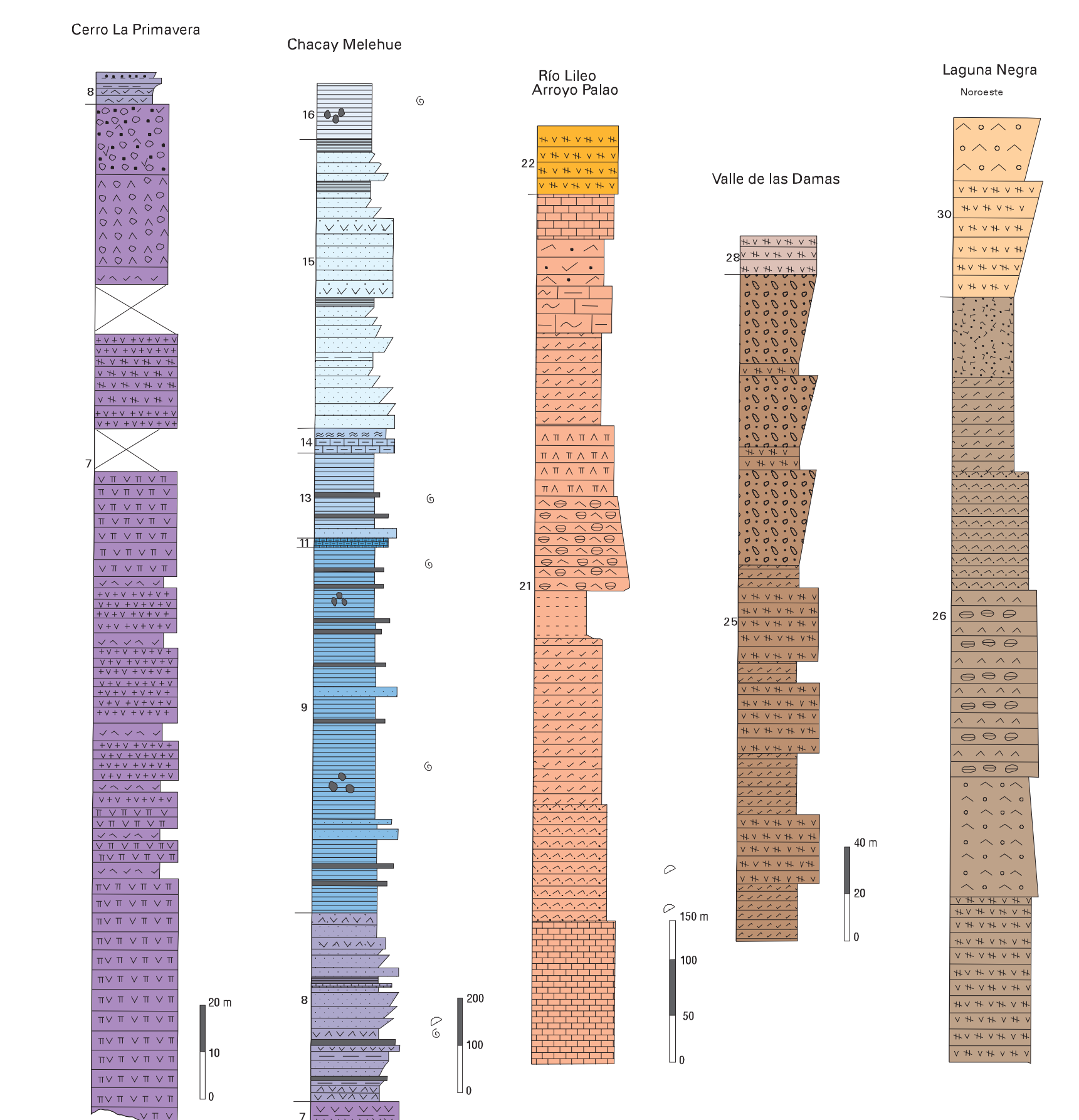
Information sources, digitalization details, and edition date (14 de Mayo 2005).

Programa Nacional de Cartas Geológicas, Ley N. 24.224 de Reordenamiento Minero, ESCALA 1:250.000, PROYECCION GAUSS-KRUEGER EQUIDISTANCIA 100 METROS.

NORMAS, DIRECCION Y SUPERVISION DEL IGM: GEOLOGIA: Elizabeth Rivera, Alberto Casati, Carlos A. Hugo, Héctor A. Lanza, Silvia Tosti, Andrés Fraguera, RECURSOS MINERALES: Rafael González, Juan E. Colombo, Juan C. Danelli, SUPERVISOR: Héctor A. Lanza.



PERFILES COLUMNARES



- Legend for the columnar profiles, detailing lithological units and their characteristics.