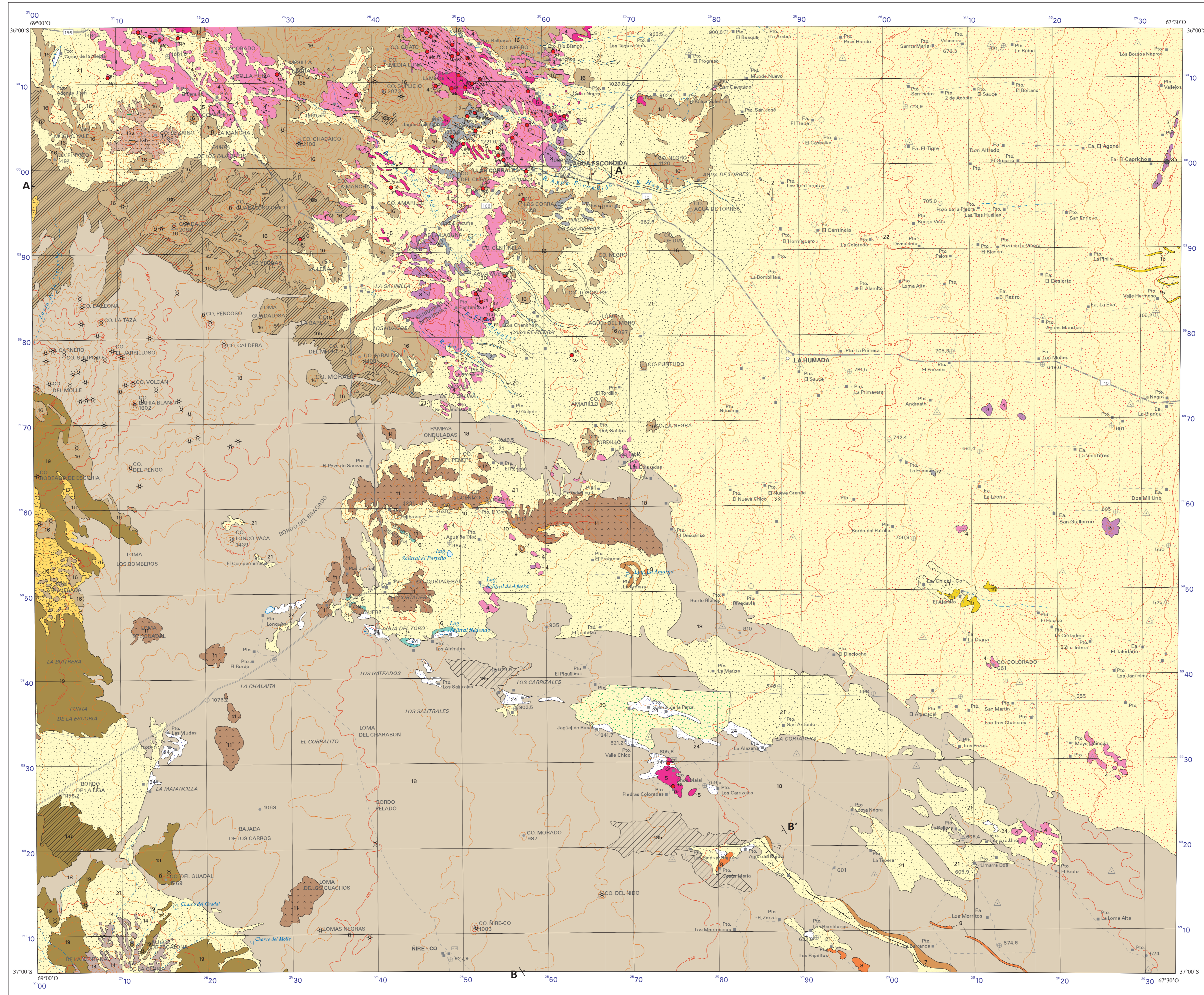
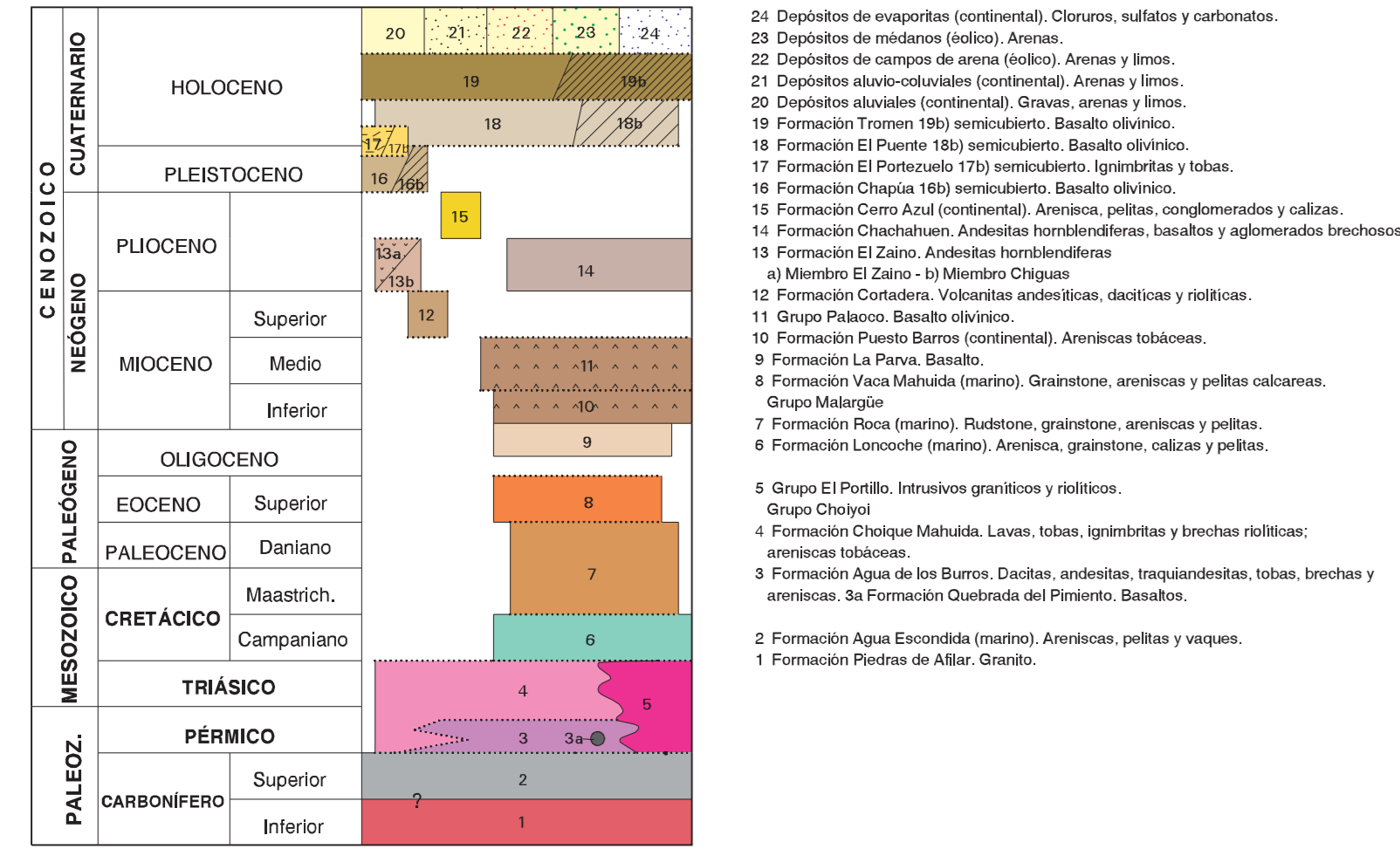
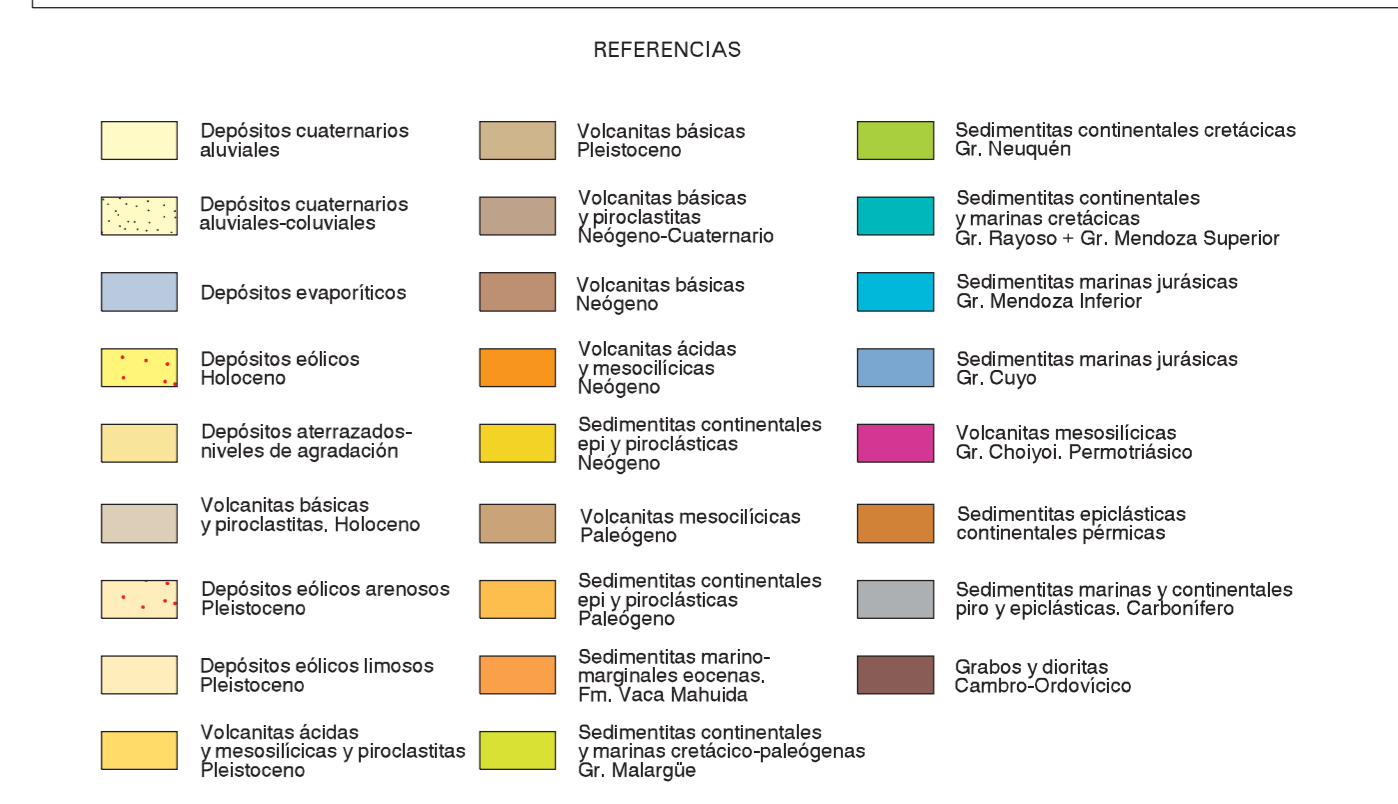
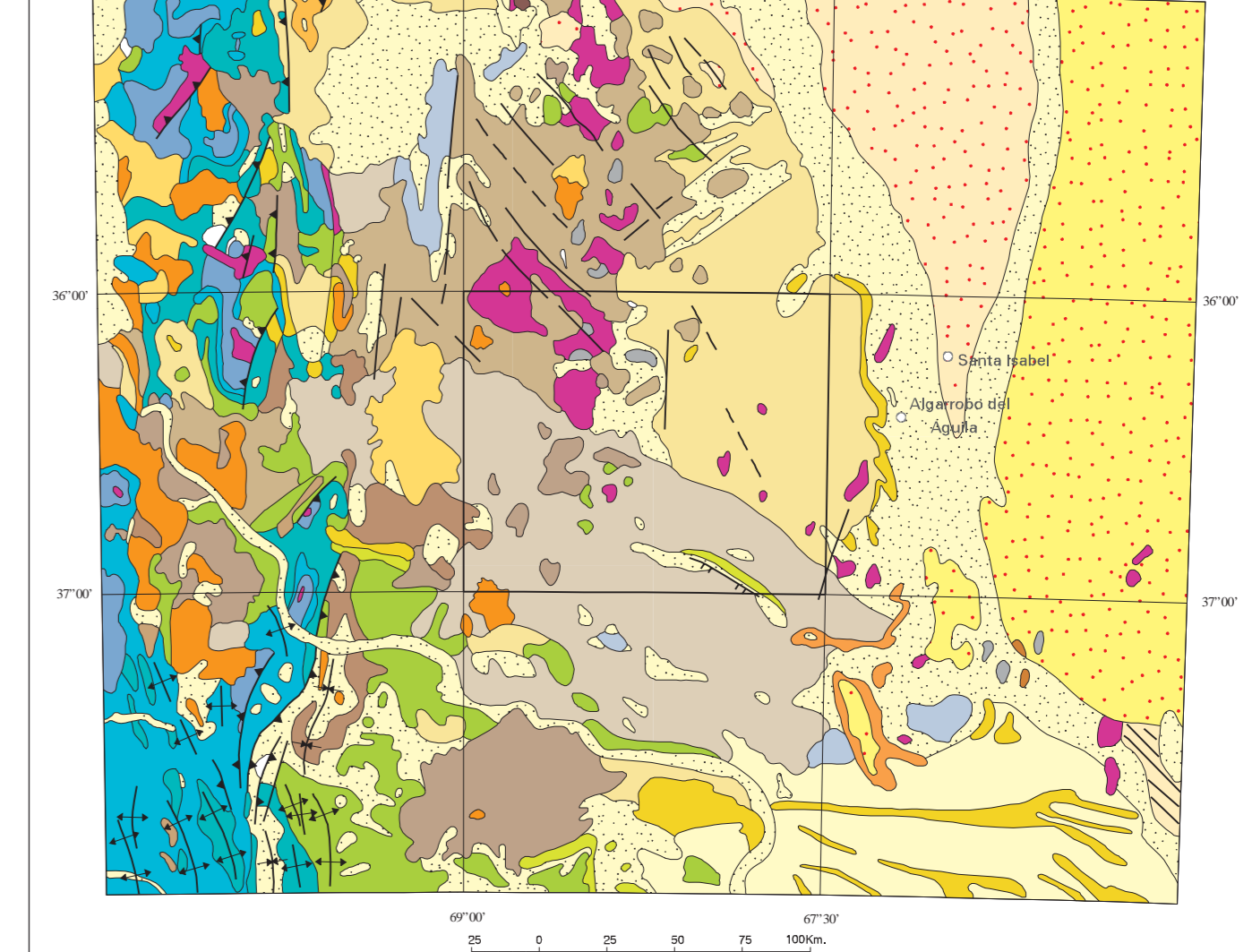


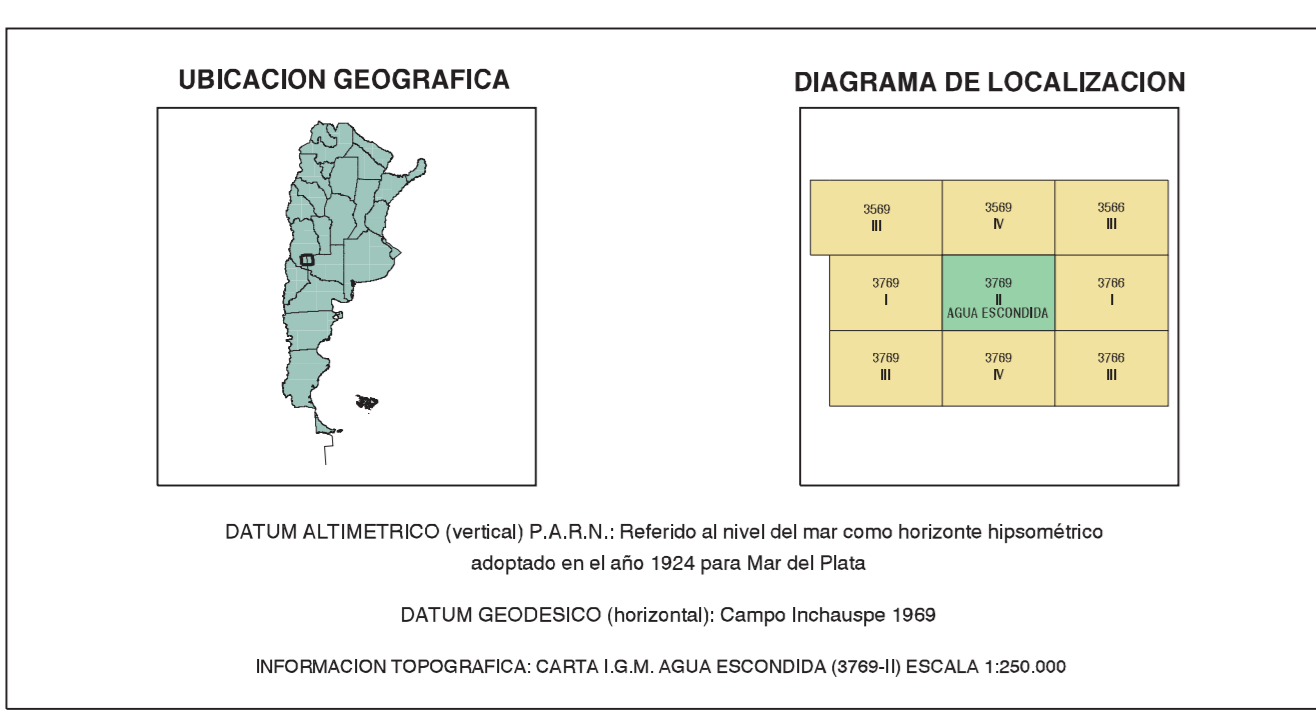
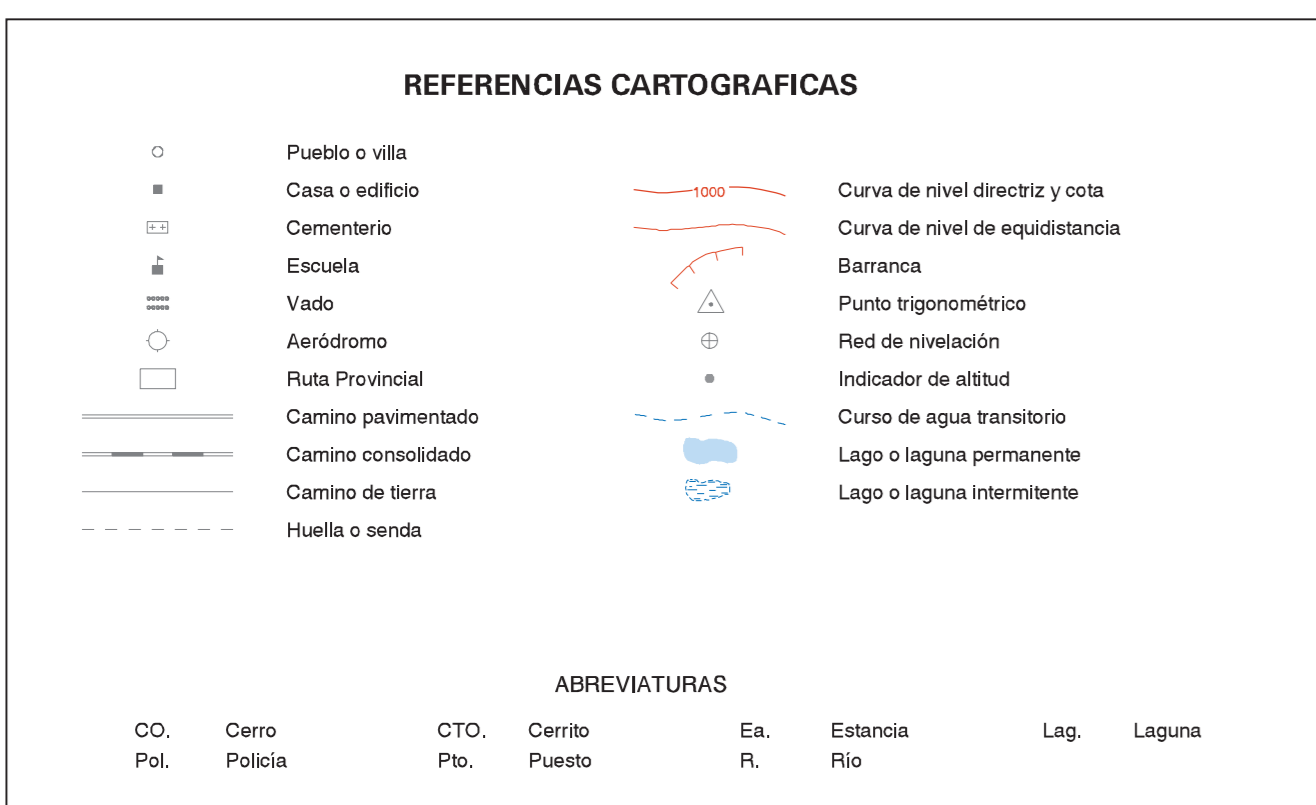
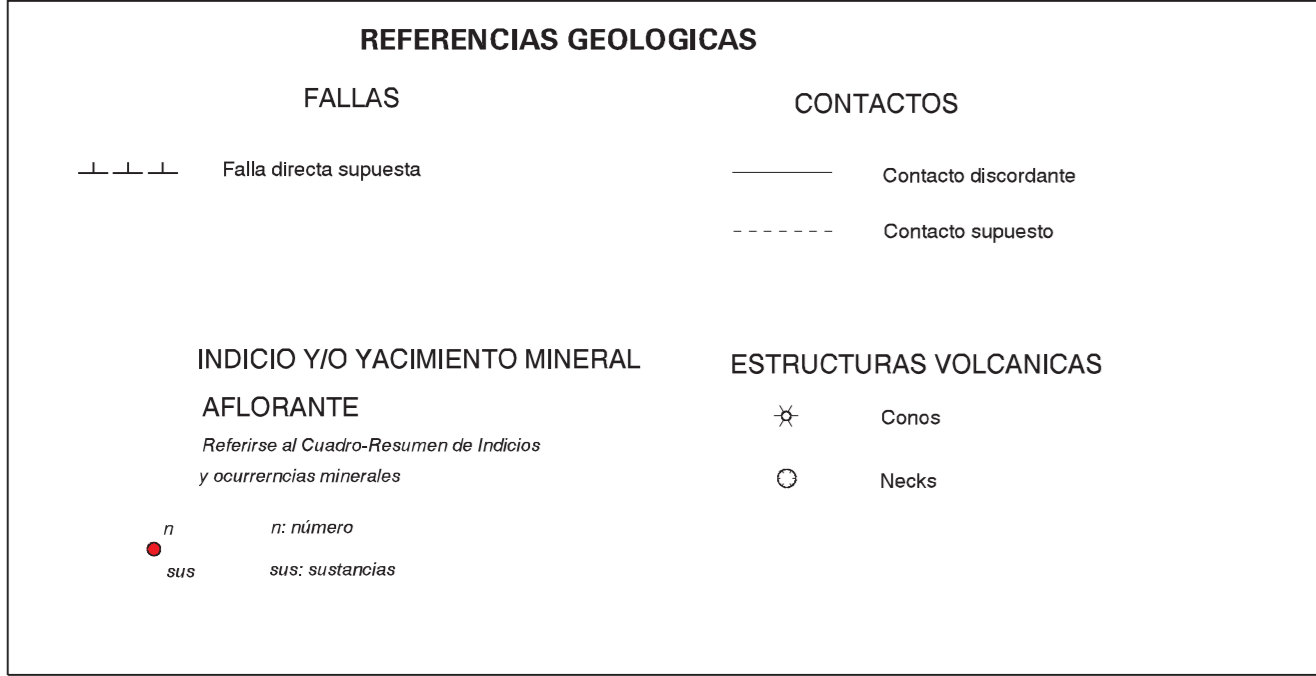
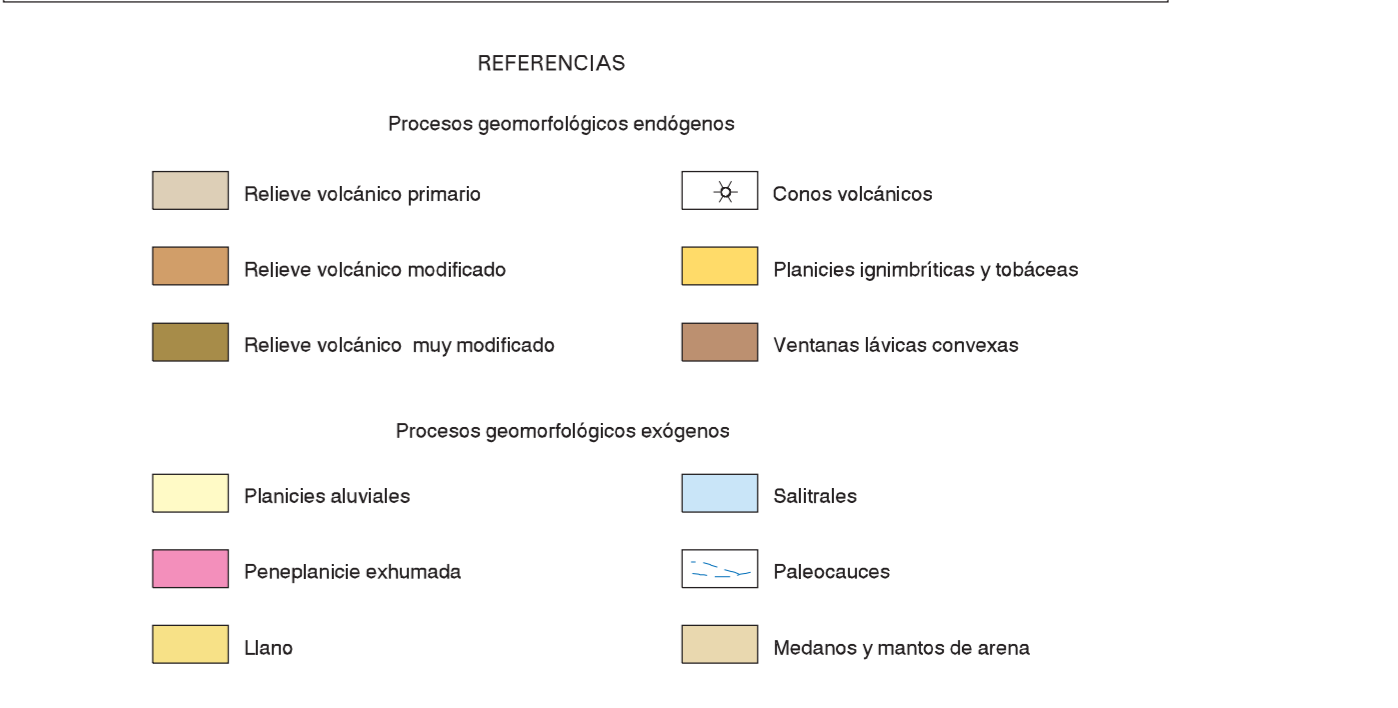
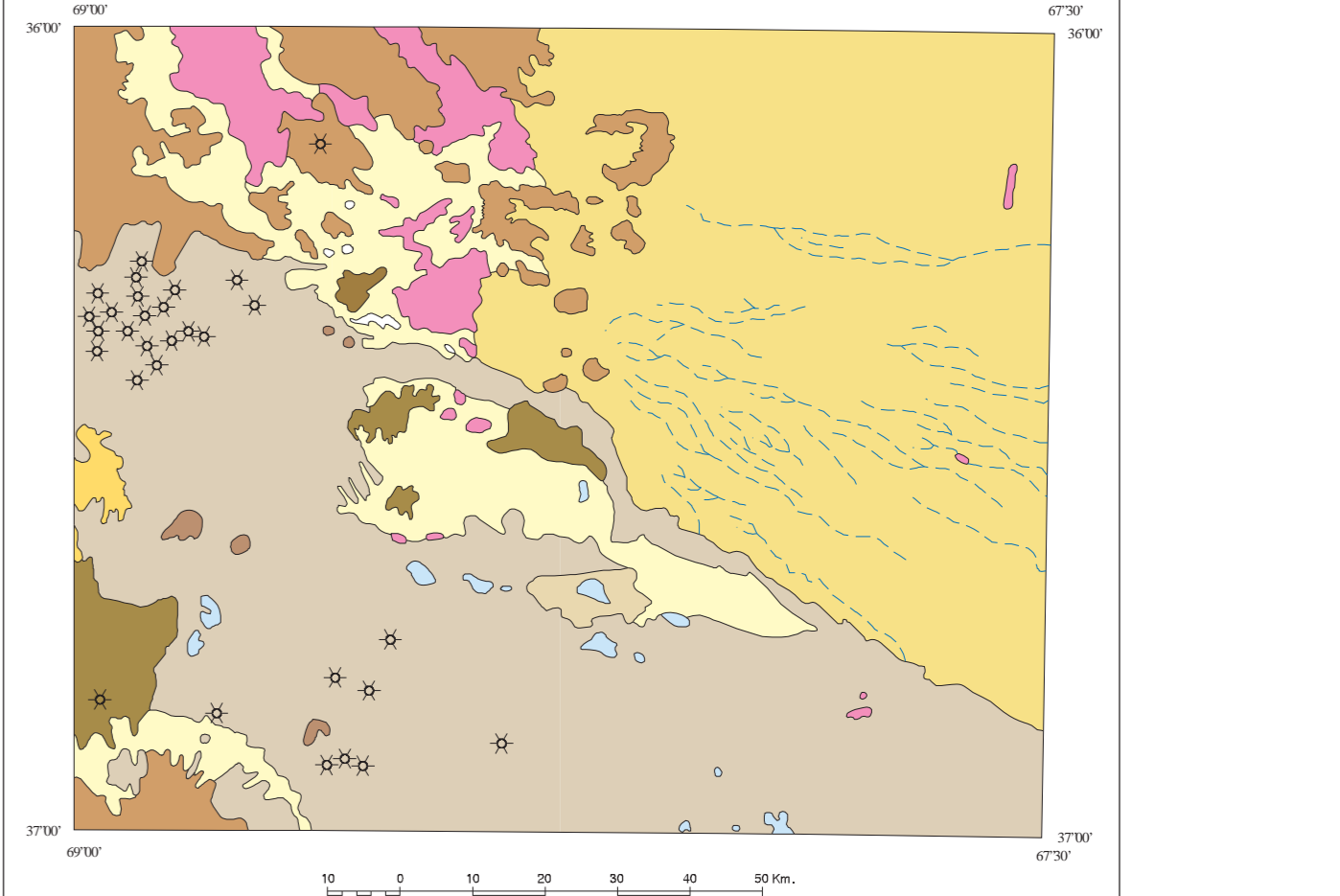
CUADRO ESTRATIGRAFICO



ESQUEMA REGIONAL



ESQUEMA GEOMORFOLOGICO



TRATAMIENTO INFORMATICO: UNIDAD SENSORES REMOTOS Y SIG. IGRM

EDICION 20 de Abril 2008

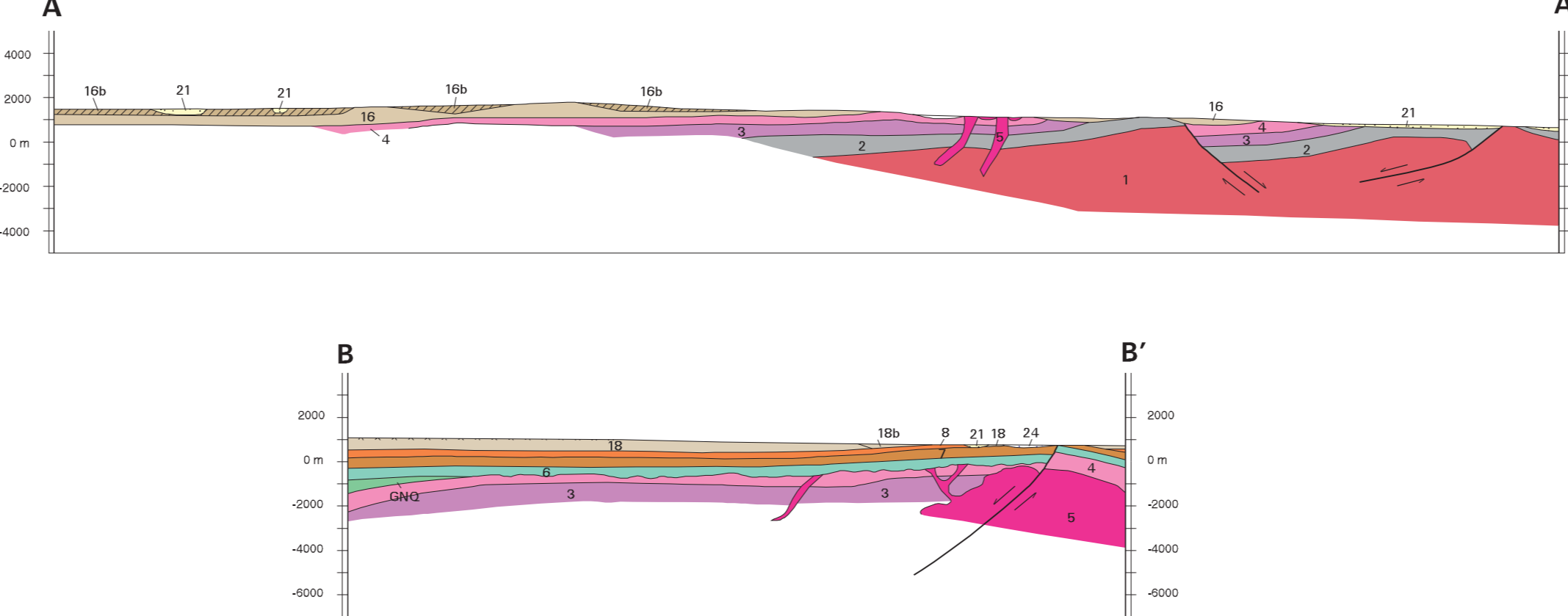
Programa Nacional de Cartas Geológicas Ley 17.242 de Recoleccionamiento Minero

ESCALA 1:250.000

PROYECCION GAUSS-KRUGER EQUIDISTANCIA 900 METROS

NORMAS, DIRECCION Y SUPERVISION DEL IGRM Geólogo: V. Narcizo, J. C. Zanetti, E. Sepúlveda Indicos Mineros: H. Mallimaci

PERFILES TRANSVERSALES



PERFILES COLUMNARES

